

Serie 1000

 1000 Pag. 8.4	 1010 Pag. 8.4	 1015 Pag. 8.4	 1020 Pag. 8.5	 1021 Pag. 8.5	 1025 Pag. 8.5	 1026 Pag. 8.6	 1027 Pag. 8.6	 1028 Pag. 8.6
 1029 Pag. 8.7	 1030 Pag. 8.7	 1035 Pag. 8.7	 1040 Pag. 8.7	 1050 Pag. 8.8	 1100 Pag. 8.8	 1101 Pag. 8.8	 1110 Pag. 8.8	 1115 Pag. 8.9
 1120 Pag. 8.9	 1130 Pag. 8.9	 1200 Pag. 8.9	 1210 Pag. 8.10	 1215 Pag. 8.10	 1220 Pag. 8.10	 1230 Pag. 8.10	 1300 Pag. 8.11	 51410 Pag. 8.11
 51420 Pag. 8.11	 51430 Pag. 8.11	 51440 Pag. 8.12	 1500 Pag. 8.12	 1510 Pag. 8.12	 LG 410 Pag. 8.13	 LG 500 Pag. 8.13	 1600 Pag. 8.13	 1610 Pag. 8.13
 1612 Pag. 8.13	 1613 Pag. 8.14	 1700 Pag. 8.14	 1710 Pag. 8.14	 1750 Pag. 8.14	 8610 Pag. 8.14			

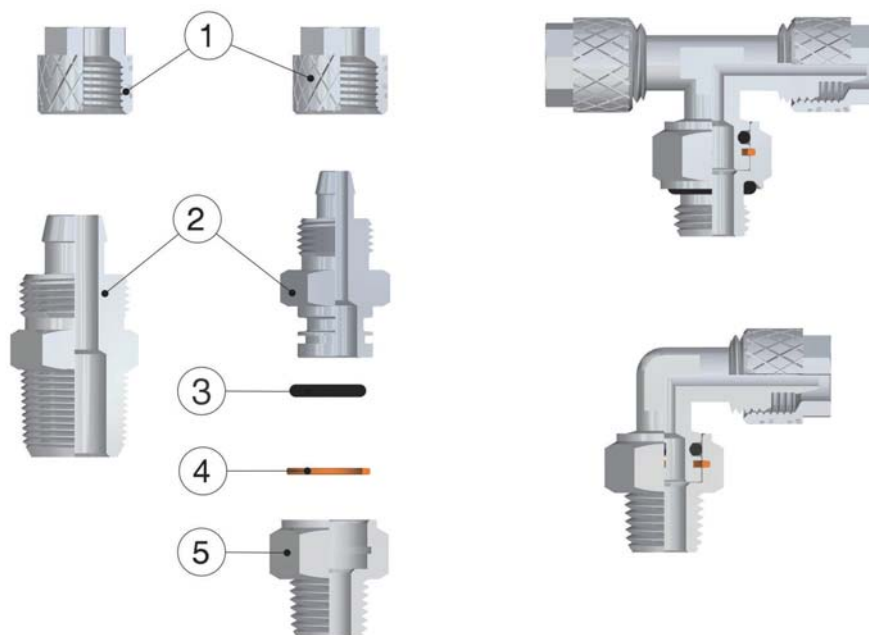


Serie 1000

RACCORDI A CALZAMENTO - PUSH-ON FITTINGS

1000

Caratteristiche Tecniche / Technical Characteristics



Materiali e Componenti / Component Parts and Materials

- | | |
|--------------------------------|----------------------------|
| 1 Dado in Ottone Nichelato | 1 Nickel-plated Brass Nut |
| 2 Corpo in Ottone Nichelato | 2 Nickel-plated Brass Body |
| 3 Guarnizione O-Ring in NBR 70 | 3 NBR 70 O-RING Seals |
| 4 Seeger in Bronzo | 4 Bronze Seeger |
| 5 Base in ottone Nichelato | 5 Nickel-plated Brass Base |

**IN NESSUN CASO I RACCORDI
"GIREVOLI" DEVONO ESSERE IMPIEGATI
COME GIUNTI ROTANTI.**
UNDER NO CIRCUMSTANCES, THE
"SWIVEL" FITTINGS CAN BE USED AS
REVOLVING JOINTS.

Pressioni e Temperature / Pressures and Temperatures

Pressioni e temperature sono determinate dal tipo di tubo impiegato, pertanto tali valori sono da definirsi in base alle caratteristiche del tubo stesso.
The working pressures and working temperatures depend on which type of tube is used, for this reason, the values must be determined in accordance with the tube's features.

Per i raccordi nella versione "girevole e O-RING sul filetto" i valori sono:
For the "swivel and thread with O-RING" fittings, the values are:

Pressioni / Pressures

Pressione minima / Minimum pressure: **-0.99 bar** (-0.099 MPa)
Pressione massima / Maximum pressure: **15 bar** (1.5 MPa)

Temperature / Temperatures

Temperatura minima / Minimum temperature: **-20 °C**
Temperatura massima / Maximum temperature: **+80 °C**

Filettature / Threads

Gas conica conforme ISO 7.1, BS 21, DIN 2999
Tapered gas in conformity with ISO 7.1, BS 21, DIN 2999.
Gas cilindrica conforme ISO 228 Classe A
Parallel gas in conformity with ISO 228 Class A.
Metrica conforme ISO R/262 /Metric in conformity with ISO R/262.

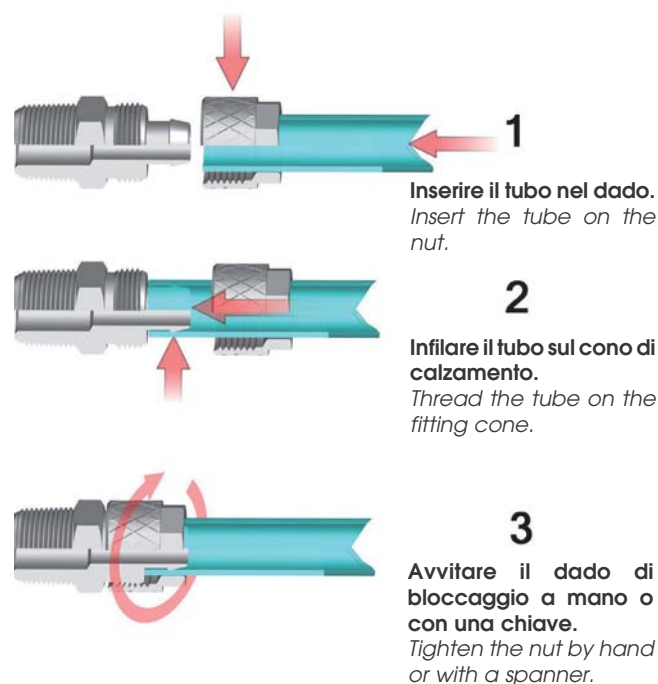
Fluidi compatibili / Fluids

Aria compressa. Fluidi e liquidi a bassa pressione compatibili con il tipo di accoppiamento.
Compressed air. Fluids and liquids at low pressure compatible with the connection.

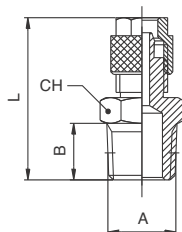
Tubi di collegamento / Connection Tubes

Tubi in materiale plastico:
PA6, PA11, PA 12, Polietilene, Poliuretano, FEP, PTFE.
Plastic tubes:
PA6, PA11, PA12, Polyethylene, Polyurethane, PEF, PTFE.

Montaggio / Assembling

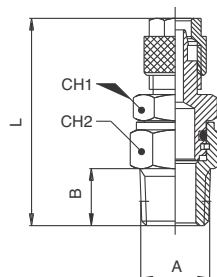


1000

RACCORDO DIRITTO MASCHIO CONICO - STRAIGHT MALE ADAPTOR (TAPER)


Codice Code	Tubo Tube	A	B	L	CH	Conf. Pack.
010000001	4/2.7	1/8	7.5	23.5	12	50
010000002	5/3	1/8	7.5	23	12	50
010000003	6/4	1/8	7.5	25.6	12	50
010000004	6/4	1/4	11	29.6	14	50
010000005	6/4	3/8	11.5	30	17	25
010000006	8/6	1/8	7.5	26.9	14	50
010000007	8/6	1/4	11	30.9	14	50
010000008	8/6	3/8	11.5	31.4	17	25
010000009	8/6	1/2	14	34	22	25
010000010	10/8	1/8	7.5	29	14	50
010000011	10/8	1/4	11	33	14	25
010000012	10/8	3/8	11.5	33.5	17	25
010000013	10/8	1/2	14	36.5	22	25
010000014	12/10	3/8	11.5	35	17	25
010000015	12/10	1/2	14	38	22	25
010000016	15/12.5	1/2	14	40	22	25

1010

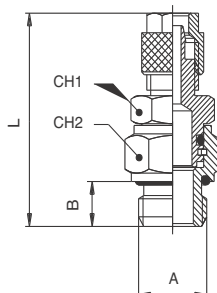
RACCORDO DIRITTO ORIENTABILE MASCHIO CONICO - ORIENTING STRAIGHT MALE ADAPTOR (TAPER)


Codice Code	Tubo Tube	A	B	L	CH1	CH2	Conf. Pack.
010100001	6/4	1/8	7.5	33.5	12	13	50
010100002	6/4	1/4	11	40	14	15	50
010100003	8/6	1/8	7.5	33.5	12	13	50
010100004	8/6	1/4	11	40	14	15	25
010100007	10/6.5	1/4	11	41	14	15	25
010100005	10/8	1/4	11	41	14	15	25
010100008	12/8	3/8	11.5	43.5	17	17	25
010100006	12/10	3/8	11.5	43.5	17	17	25

Misure specifiche per tubi in POLIURETANO.
Particular sizes for the POLYURETHANE tubing.

Per tubo in POLIURETANO da 8/5 consigliamo l'utilizzo della nostra misura standard 8/6.
For the POLYURETHANE tube 8/5 we suggest to use the standard size 8/6.

1015

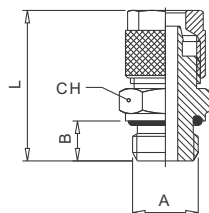
RACCORDO DIRITTO ORIENTABILE MASCHIO CILINDRICO - ORIENTING STRAIGHT MALE ADAPTOR (PARALLEL)


Codice Code	Tubo Tube	A	B	L	CH1	CH2	Conf. Pack.
010150001	6/4	1/8	6	34	12	13	50
010150002	6/4	1/4	8	38	14	16	50
010150003	8/6	1/8	6	34	12	13	50
010150004	8/6	1/4	8	38	14	16	25
010150005	10/6.5	1/4	8	40	14	16	25
010150006	10/8	1/4	8	39	14	16	25
010150007	12/8	3/8	9	42.5	17	18	25
010150008	12/10	3/8	9	42.5	17	18	25

Misure specifiche per tubi in POLIURETANO.
Particular sizes for the POLYURETHANE tubing.

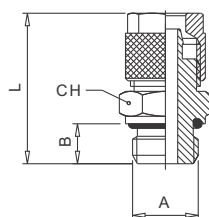
Per tubo in POLIURETANO da 8/5 consigliamo l'utilizzo della nostra misura standard 8/6.
For the POLYURETHANE tube 8/5 we suggest to use the standard size 8/6.

1020

RACCORDO DIRITTO MASCHIO CILINDRICO - STRAIGHT MALE ADAPTOR (PARALLEL)


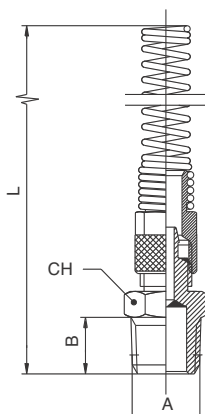
Codice Code	Tubo Tube	A	B	L	CH	Conf. Pack.
010200001	4/2.7	1/8	6	23	13	50
010200002	5/3	1/8	6	25.1	13	50
010200003	6/4	1/8	6	25.1	13	50
010200004	6/4	1/4	8	28.1	16	50
010200005	6/4	3/8	9	29.1	19	25
010200006	6/4	1/2	10	32	24	25
010200007	8/6	1/8	6	26.4	14	50
010200008	8/6	1/4	8	29.4	16	25
010200009	8/6	3/8	9	30.4	19	25
010200010	8/6	1/2	10	32	24	25
010200011	10/8	1/8	6	28.5	14	25
010200012	10/8	1/4	8	31.5	16	25
010200013	10/8	3/8	9	32.5	19	25
010200014	10/8	1/2	10	34.5	24	25
010200015	12/10	3/8	9	34	19	25
010200016	12/10	1/2	10	36	24	25
010200017	15/12.5	1/2	10	38	24	25

1021

RACCORDO DIRITTO MASCHIO CON FILETTATURE METRICHE - STRAIGHT MALE ADAPTOR WITH METRIC THREAD


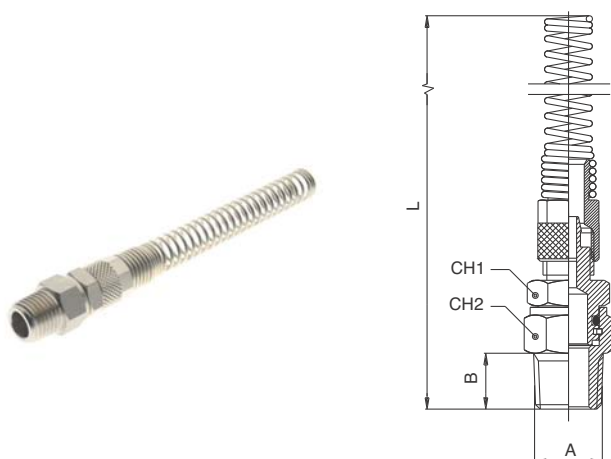
Codice Code	Tubo Tube	A	B	L	CH	Conf. Pack.
010210001	4/2.7	M5	4	20.5	8	50
010210002	4/2.7	M6	5	21.5	8	50
010210003	5/3	M5	4	23.1	8	50
010210004	5/3	M6	5	23.1	8	50
010210005	6/4	M5	4	23.1	8	50
010210006	6/4	M6	5	23.1	8	50
010210007	6/4	M12x1	8	28.1	15	25
010210008	6/4	M12x1.25	8	28.1	15	25
010210009	6/4	M12x1.5	8	28.1	15	25

1025

RACCORDO DIRITTO MASCHIO CONICO + DADO CON MOLLA - STRAIGHT MALE ADAPTOR (TAPER) + NUT WITH SPRING


Codice Code	Tubo Tube	A	B	L	CH	Conf. Pack.
010250001	6/4	1/8	7.5	108	12	25
010250002	6/4	1/4	11	112.5	14	25
010250003	8/6	1/8	7.5	113.5	14	25
010250004	8/6	1/4	11	118	14	25
010250005	8/6	3/8	11.5	119	17	25
010250006	8/6	1/2	14	121	22	25
010250007	10/8	1/8	7.5	122	14	25
010250008	10/8	1/4	11	126	14	25
010250009	10/8	3/8	11.5	127	17	25
010250010	10/8	1/2	14	130	22	25
010250011	12/10	3/8	11.5	134	17	25
010250012	12/10	1/2	14	137	22	25

1026

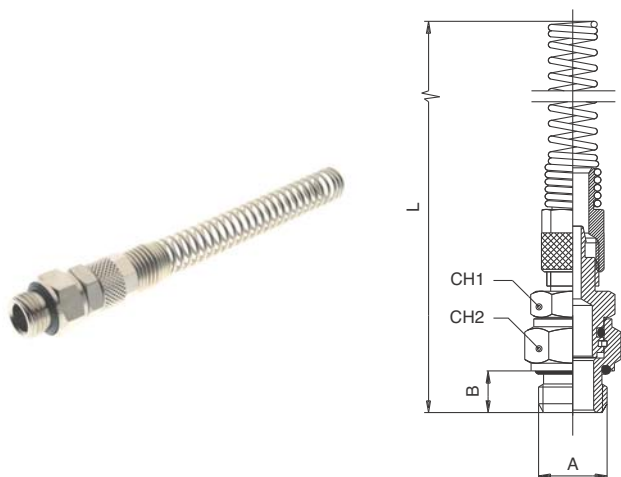
RACCORDO DIRITTO ORIENTABILE MASCHIO CONICO + DADO CON MOLLA - ORIENTING STRAIGHT MALE ADAPTOR (TAPER) + NUT WITH SPRING


Codice Code	Tubo Tube	A	B	L	CH1	CH2	Conf. Pack.
0102600001	6/4	1/8	7.5	117.5	12	13	25
0102600002	6/4	1/4	11	121	14	15	25
0102600003	8/6	1/8	7.5	121	12	13	25
0102600004	8/6	1/4	11	128	14	15	25
0102600005	10/6.5	1/4	11	135	14	15	25
0102600006	10/8	1/4	11	136	14	15	25
0102600007	12/8	3/8	11.5	144	17	17	25
0102600008	12/10	3/8	11.5	144	17	17	25

Misure specifiche per tubi in POLIURETANO.
Particular sizes for the POLYURETHANE tubing.

Per tubo in POLIURETANO da 8/5 consigliamo l'utilizzo della nostra misura standard 8/6.
For the POLYURETHANE tube 8/5 we suggest to use the standard size 8/6.

1027

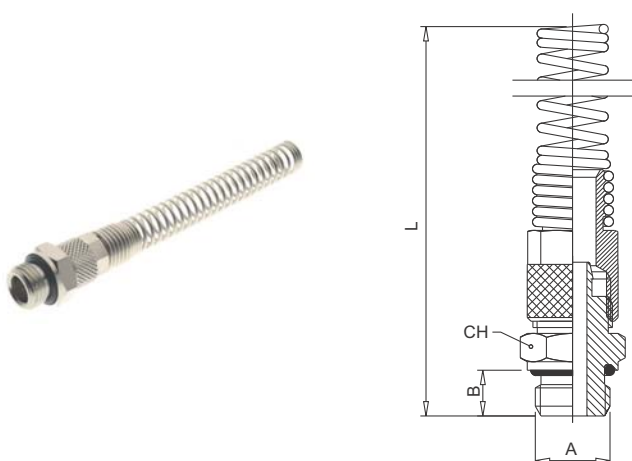
RACCORDO DIRITTO ORIENTABILE MASCHIO CILINDRICO + DADO CON MOLLA - ORIENTING STRAIGHT MALE ADAPTOR (PARALLEL) + NUT WITH SPRING


Codice Code	Tubo Tube	A	B	L	CH1	CH2	Conf. Pack.
0102700001	6/4	1/8	6	116	12	13	25
0102700002	6/4	1/4	8	121	14	16	25
0102700003	8/6	1/8	6	122	12	13	25
0102700004	8/6	1/4	8	126	14	16	25
0102700005	10/6.5	1/4	8	134	14	16	25
0102700006	10/8	1/4	8	134	14	16	25
0102700007	12/8	3/8	9	143	17	18	25
0102700008	12/10	3/8	9	142	17	18	25

Misure specifiche per tubi in POLIURETANO.
Particular sizes for the POLYURETHANE tubing.

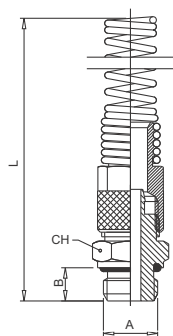
Per tubo in POLIURETANO da 8/5 consigliamo l'utilizzo della nostra misura standard 8/6.
For the POLYURETHANE tube 8/5 we suggest to use the standard size 8/6.

1028

RACCORDO DIRITTO MASCHIO CILINDRICO + DADO CON MOLLA - STRAIGHT MALE ADAPTOR (PARALLEL) + NUT WITH SPRING


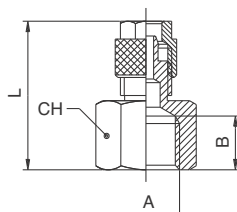
Codice Code	Tubo Tube	A	B	L	CH	Conf. Pack.
0102800001	6/4	1/8	6	109	13	25
0102800002	6/4	1/4	8	111	16	25
0102800003	6/4	3/8	9	112	19	25
0102800004	6/4	1/2	10	114	24	25
0102800005	8/6	1/8	6	114	14	25
0102800006	8/6	1/4	8	116.5	16	25
0102800007	8/6	3/8	9	117.5	19	25
0102800008	8/6	1/2	10	119.5	24	25
0102800009	10/8	1/8	6	121.5	14	25
0102800010	10/8	1/4	8	125.5	16	25
0102800011	10/8	3/8	9	125.5	19	25
0102800012	10/8	1/2	10	128.5	24	25
0102800013	12/10	3/8	9	133	19	25
0102800014	12/10	1/2	10	134.5	24	25

1029

RACCORDO DIRITTO MASCHIO CON FILETTATURE METRICHE + DADO CON MOLLA - STRAIGHT MALE ADAPTOR WITH METRIC THREAD + NUT WITH SPRING


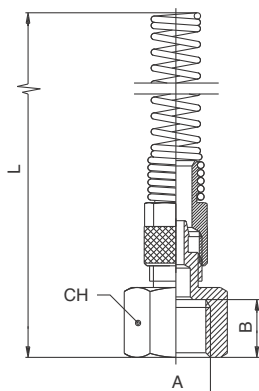
Codice Code	Tubo Tube	A	B	L	CH	Conf. Pack.
010290001	6/4	M12x1	8	111	15	25
010290002	6/4	M12x1.25	8	111	15	25
010290003	6/4	M12x1.5	8	111	15	25

1030

RACCORDO DIRITTO FEMMINA - STRAIGHT FEMALE ADAPTOR


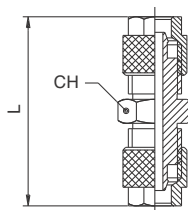
Codice Code	Tubo Tube	A	B	L	CH	Conf. Pack.
010300001	6/4	1/8	8.5	23.3	14	50
010300002	6/4	1/4	11	27	17	50
010300003	6/4	3/8	11.5	28	22	25
010300004	8/6	1/8	8	24.7	14	50
010300005	8/6	1/4	11	28.7	17	25
010300006	8/6	3/8	11.5	29.2	22	25
010300007	8/6	1/2	15.5	33	24	25
010300008	10/8	1/4	11	30.5	17	25
010300009	10/8	3/8	11.5	31	22	25
010300010	10/8	1/2	15.5	34.5	24	25
010300011	12/10	3/8	11.5	32.5	22	25

1035

RACCORDO DIRITTO FEMMINA + DADO CON MOLLA - STRAIGHT FEMALE ADAPTOR + NUT WITH SPRING


Codice Code	Tubo Tube	A	B	L	CH	Conf. Pack.
010350001	6/4	1/8	8.5	106	14	25
010350002	6/4	1/4	11	109	17	25
010350003	6/4	3/8	11.5	110	22	25
010350004	8/6	1/8	8	112	14	25
010350005	8/6	1/4	11	115.5	17	25
010350006	8/6	3/8	11.5	116	22	25
010350007	8/6	1/2	15.5	119.5	24	25
010350008	10/8	1/4	11	123	17	25
010350009	10/8	3/8	11.5	124.5	22	25
010350010	10/8	1/2	15.5	128.5	24	25
010350011	12/10	3/8	11.5	131	22	25

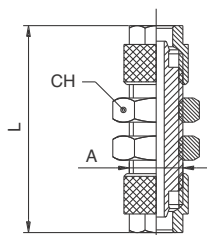
1040

RACCORDO DIRITTO INTERMEDIO - STRAIGHT CONNECTOR


Codice Code	Tubo Tube	Tubo Tube	L	CH	Conf. Pack.
010400001	4/2.7		27.5	8	50
010400002	5/3		31.7	8	50
010400003	6/4	5/3	32.2	12	50
010400004	6/4		32.2	12	50
010400005	8/6	6/4	33.5	12	25
010400006	8/6		34.8	12	25
010400007	10/8	6/4	35.6	14	25
010400008	10/8	8/6	36.9	14	25
010400009	10/8		39	14	25
010400010	12/10		43	17	25
010400011	15/12.5		47	22	25

1050

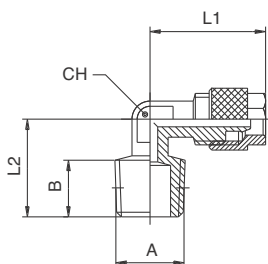
RACCORDO INTERMEDIO DI ATTRAVERSAMENTO - BULKHEAD CONNECTOR



Code Code	Tubo Tube	A	L	CH	Conf. Pack.
010500001	4/2.7	M6x0.5	35	10	50
010500002	5/3	M7x0.75	35	10	50
010500003	6/4x5/3	M10x1	45.5	14	50
010500004	6/4	M10x1	45.5	14	25
010500005	8/6x6/4	M12x1	47.3	17	25
010500006	8/6	M12x1	48.4	17	25
010500007	10/8x6/4	M14x1	49.8	17	25
010500008	10/8x8/6	M14x1	51.2	17	25
010500009	10/8	M14x1	52	17	25
010500010	12/10	M16x1	57	19	25
010500011	15/12.5	M20x1	59	24	25

1100

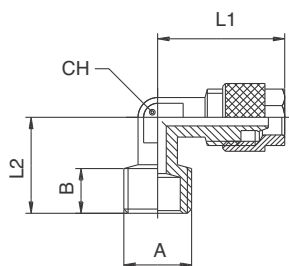
RACCORDO A L MASCHIO CONICO - ELBOW MALE ADAPTOR (TAPER)



Code Code	Tubo Tube	A	B	L1	L2	CH	Conf. Pack.
011000001	4/2.7	1/8	7.5	19.5	15	8	50
011000002	5/3	1/8	7.5	19.5	15	8	50
011000003	6/4	1/8	7.5	19.5	15	8	50
011000004	6/4	1/4	11	20.6	19	8	50
011000005	6/4	3/8	11.5	21	21	9	25
011000006	8/6	1/8	7.5	19.9	16.5	9	50
011000007	8/6	1/4	11	21.9	19	9	50
011000008	8/6	3/8	11.5	23.4	21	9	25
011000009	8/6	1/2	14	26	28	16	25
011000010	10/8	1/8	7.5	25	18	11	25
011000011	10/8	1/4	11	24	22	11	25
011000012	10/8	3/8	12.5	25.5	22.5	11	25
011000013	10/8	1/2	14	28	28	16	25
011000014	12/10	3/8	11.5	27	22.5	13	25
011000015	12/10	1/2	14	30	28	16	25
011000016	15/12.5	1/2	14	31.5	28	16	25

1101

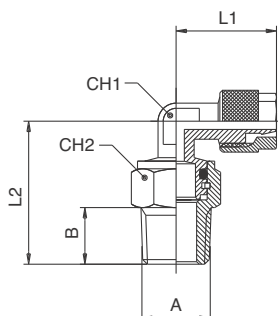
RACCORDO A L CON FILETTATURE METRICHE - ELBOW MALE ADAPTOR WITH METRIC THREAD



Code Code	Tubo Tube	A	B	L1	L2	CH	Conf. Pack.
011010001	6/4	M12x1	11	20.6	19	8	25
011010002	6/4	M12x1.25	11	20.6	19	8	25
011010003	6/4	M12x1.5	11	20.6	19	8	25

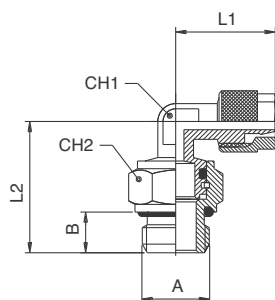
1110

RACCORDO A L ORIENTABILE MASCHIO CONICO - ORIENTING ELBOW MALE ADAPTOR (TAPER)



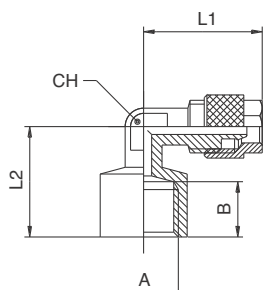
Code Code	Tubo Tube	A	B	L1	L2	CH1	CH2	Conf. Pack.
011100006	4/2.7	1/8	7.5	20	22.5	8	13	50
011100001	6/4	1/8	7.5	20.6	22.5	8	13	50
011100002	6/4	1/4	11	20.6	28	8	15	25
011100003	8/6	1/8	7.5	21.6	22.5	9	13	25
011100004	8/6	1/4	11	23.1	28.5	9	15	25
011100005	10/8	1/4	11	24	30.5	11	15	25

1115

RACCORDO A L ORIENTABILE MASCHIO CILINDRICO - ORIENTING ELBOW MALE ADAPTOR (PARALLEL)


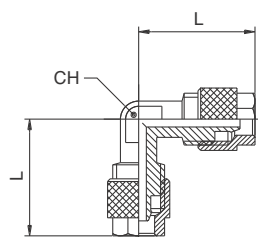
Codice Code	Tubo Tube	A	B	L1	L2	CH1	CH2	Conf. Pack.
0111500006	4/2.7	1/8	6	18.5	22	8	13	50
0111500001	6/4	1/8	6	20.6	22	8	13	50
0111500002	6/4	1/4	8	20.6	26	8	16	25
0111500003	8/6	1/8	6	21.6	21.6	9	13	25
0111500004	8/6	1/4	8	23.1	26.5	9	16	25
0111500005	10/8	1/4	8	24	27.5	11	16	25

1120

RACCORDO A L FEMMINA - ELBOW FEMALE ADAPTOR


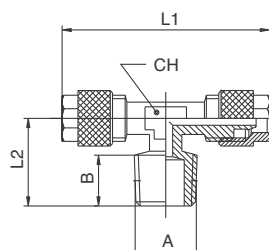
Codice Code	Tubo Tube	A	B	L1	L2	CH	Conf. Pack.
0112000001	5/3	1/8	8.5	20.6	18	8	50
0112000002	6/4	1/8	8.5	20.6	18	8	50
0112000003	6/4	1/4	10.5	21	21	9	25
0112000004	8/6	1/8	8.5	21.9	19	9	25
0112000005	8/6	1/4	10.5	23.4	21	9	25
0112000006	10/8	1/4	10.5	25.5	22.5	11	25
0112000007	10/8	3/8	11.5	28	27	16	25

1130

RACCORDO A L INTERMEDIO - ELBOW CONNECTOR


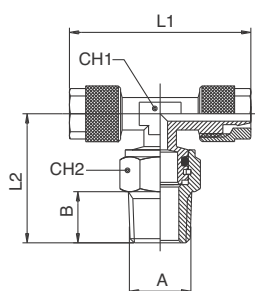
Codice Code	Tubo Tube	Tubo Tube	L	CH	Conf. Pack.
0113000001	4/2.7		20	8	50
0113000002	5/3		20.6	8	50
0113000003	6/4		20.6	8	50
0113000004	8/6	6/4	21.9	9	25
0113000005	8/6		21.9	9	25
0113000006	10/8		25.5	11	25
0113000007	12/10		27	13	25
0113000008	15/12.5		33.5	16	25

1200

RACCORDO A T MASCHIO CONICO - TEE MALE ADAPTOR (TAPER) - CENTRE LEG


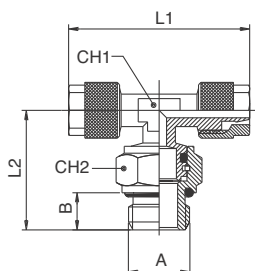
Codice Code	Tubo Tube	A	B	L1	L2	CH	Conf. Pack.
0120000001	4/2.7	1/8	7.5	37	15.5	8	50
0120000002	5/3	1/8	7.5	39	15.5	8	50
0120000003	6/4	1/8	7.5	39	15.5	8	50
0120000004	6/4	1/4	11	41.2	19	8	25
0120000005	8/6	1/8	7.5	39.8	16.5	9	25
0120000006	8/6	1/4	11	43.8	20.5	9	25
0120000007	10/8	1/8	7.5	48	19	11	25
0120000008	10/8	1/4	11	48	22	11	25
0120000009	10/8	3/8	11.5	51	22	11	25
0120000010	12/10	3/8	11.5	54	22.5	14	25
0120000011	15/12.5	1/2	14	63	28	16	25

1210

RACCORDO A T ORIENTABILE MASCHIO CONICO - ORIENTING TEE MALE ADAPTOR (TAPER) - CENTRE LEG


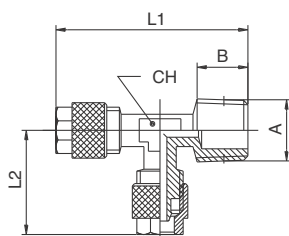
Codice Code	Tubo Tube	A	B	L1	L2	CH1	CH2	Conf. Pack.
0121000001	6/4	1/8	7.5	41.2	22.5	8	13	25
0121000002	6/4	1/4	11	41.2	28	8	15	25
0121000003	8/6	1/8	7.5	43.2	24.5	9	13	25
0121000004	8/6	1/4	11	43.2	29.5	9	15	25
0121000005	10/8	1/4	11	48	29.5	11	15	25

1215

RACCORDO A T ORIENTABILE MASCHIO CILINDRICO - ORIENTING TEE MALE ADAPTOR (PARALLEL) - CENTRE LEG


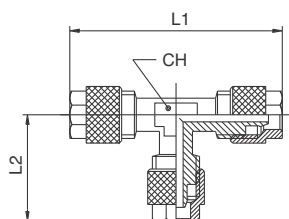
Codice Code	Tubo Tube	A	B	L1	L2	CH1	CH2	Conf. Pack.
0121500001	6/4	1/8	6	41.2	22	8	13	25
0121500002	6/4	1/4	8	41.2	26	8	16	25
0121500003	8/6	1/8	6	43.2	24	9	13	25
0121500004	8/6	1/4	8	43.2	27.5	9	16	25
0121500006	10/8	1/8	6	48	22.5	11	13	25
0121500005	10/8	1/4	8	48	27.5	11	16	25

1220

RACCORDO A T MASCHIO LATERALE CONICO - TEE MALE ADAPTOR (TAPER) - OFF SET LEG


Codice Code	Tubo Tube	A	B	L1	L2	CH	Conf. Pack.
0122000001	5/3	1/8	7.5	36.7	20.6	8	50
0122000002	6/4	1/8	7.5	36.7	20.6	8	25
0122000003	6/4	1/4	11	40.2	20.6	8	25
0122000004	8/6	1/8	7.5	38	21.9	9	25
0122000005	8/6	1/4	11	41.5	21.9	9	25
0122000006	10/8	1/8	7.5	40	25.5	11	25
0122000007	10/8	1/4	11	43	25.5	11	25
0122000008	10/8	3/8	11.5	44	25.5	11	25
0122000009	12/10	3/8	11.5	48.5	28	13	25
0122000010	15/12.5	1/2	14	57.5	32.5	16	25

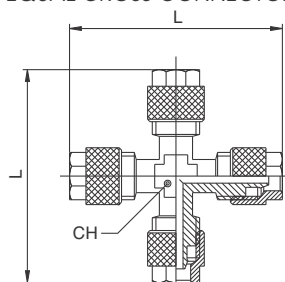
1230

RACCORDO A T INTERMEDIO - TEE CONNECTOR


Codice Code	Tubo Tube	Tubo Tube	L1	L2	CH	Conf. Pack.
0123000001	4/2.7		40	20.5	8	50
0123000002	5/3		41.2	20.6	8	50
0123000003	6/4		41.2	20.6	8	25
0123000004	8/6	6/4	43.8	20.6	9	25
0123000005	8/6		43.8	21.9	9	25
0123000006	10/8	6/4	51	20.6	11	25
0123000007	10/8	8/6	51	21.9	11	25
0123000008	10/8		51	25.5	11	25
0123000009	12/10		54	28	13	25
0123000010	15/12.5		63	32.5	16	25

1300

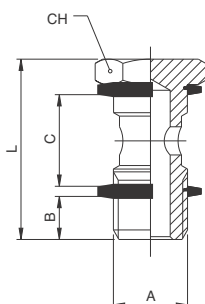
RACCORDO A CROCE INTERMEDIO - EQUAL CROSS CONNECTOR



Codice Code	Tubo Tube	L	CH	Conf. Pack.
013000001	5/3	41.6	8	50
013000002	6/4	41.6	8	25
013000003	8/6	44.4	9	25
013000004	10/8	49	11	25
013000005	12/10	58	13	25
013000006	15/12.5	64	17	25

51410

VITE CAVA SINGOLA - BANJO STEM SINGLE



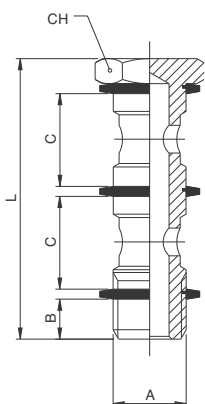
Codice Code	A	B	C	L	CH	Conf. Pack.
5141000011	M5	4	12.5	22	8	25
5141000012	M6	5	12.5	23	8	25
5141000013	1/8	6	15	28	14	25
5141000014	1/4	8	17	32	17	25
5141000015	3/8	9	20	36	19	25
5141000016	1/2	10	24	42	24	25
5141000017	*M12x1.5	8	17	32	17	25

QUESTO ARTICOLO VIENE FORNITO COMPLETO DI RONDELLE IN PA66 ART. 1610.
THIS ITEM WILL BE SUPPLIED WITH THE PA66 WASHERS ART. 1610.

*CON QUESTA VITE UTILIZZARE GLI ANELLI ORIENTABILI DA 1/4.
*WITH THIS BANJO STEM USING 1/4 ORIENTING BANJO BODY.

51420

VITE CAVA DOPPIA - BANJO STEM DOUBLE



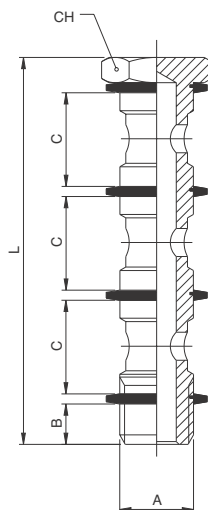
Codice Code	A	B	C	L	CH	Conf. Pack.
5142000011	1/8	6	15	44.5	14	25
5142000012	1/4	8	17	50.5	17	25
5142000013	3/8	9	20	58	19	25
5142000014	1/2	10	24	68	24	25
5142000015	*M12x1.5	8	17	50.5	17	25

QUESTO ARTICOLO VIENE FORNITO COMPLETO DI RONDELLE IN PA66 ART. 1610.
THIS ITEM WILL BE SUPPLIED WITH THE PA66 WASHERS ART. 1610.

*CON QUESTA VITE UTILIZZARE GLI ANELLI ORIENTABILI DA 1/4.
*WITH THIS BANJO STEM USING 1/4 ORIENTING BANJO BODY.

51430

VITE CAVA TRIPLA - BANJO STEM TRIPLE

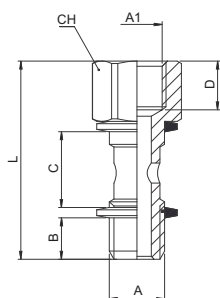


Codice Code	A	B	C	L	CH	Conf. Pack.
5143000011	1/8	6	15	61	14	25
5143000012	1/4	8	17	69	17	25
5143000013	3/8	9	20	80	19	25
5143000014	1/2	10	24	94	24	10

QUESTO ARTICOLO VIENE FORNITO COMPLETO DI RONDELLE IN PA66 ART. 1610.
THIS ITEM WILL BE SUPPLIED WITH THE PA66 WASHERS ART. 1610.

51440

VITE CAVA SINGOLA MASCHIO - FEMMINA - MALE - FEMALE BANJO STEM SINGLE

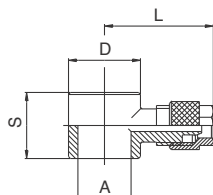


Codice Code	A	A1	B	C	D	L	CH	Conf. Pack.
514400001	1/8	1/8	6	15	8.5	34.5	14	25
514400002	1/4	1/4	8	17	11	40.5	17	25
514400003	3/8	3/8	9	20	12	45.5	19	25

QUESTO ARTICOLO VIENE FORNITO COMPLETO DI RONDELLE IN PA66 (ART. 1610).
THIS ITEM WILL BE SUPPLIED WITH THE PA66 WASHERS (ART. 1610).

1500

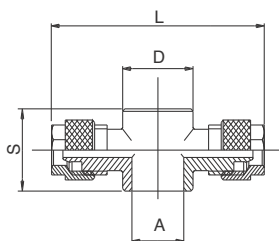
ANELLO ORIENTABILE A L - SINGLE BANJO BODY



Codice Code	Tubo Tube	A	D	S	L	Conf. Pack.
015000001	4/2.7	M5	9	12.5	21.5	50
015000002	4/2.7	M6	9	12.5	21.5	10
015000003	4/2.7	1/8	14	15	22.5	50
015000004	5/3	M5	9	12.5	22	50
015000005	5/3	1/8	14	15	22.5	50
015000006	6/4	M5	9	12.5	22	50
015000007	6/4	M6	9	12.5	22	10
015000008	6/4	1/8	14	15	23	50
015000009	6/4	1/4	18	17	25	50
015000010	6/4	3/8	21	20	27	25
015000011	8/6	1/8	14	15	24.5	50
015000012	8/6	1/4	18	17	26	25
015000013	8/6	3/8	21	20	27	25
015000014	8/6	1/2	26	24	31	25
015000015	10/8	1/8	14	15	27.5	25
015000016	10/8	1/4	18	17	27.5	25
015000017	10/8	3/8	21	20	30.5	25
015000018	10/8	1/2	26	24	34	25
015000019	12/10	3/8	21	20	31.5	25
015000020	12/10	1/2	26	24	35	25
015000021	15/12.5	1/2	26	24	36.5	25

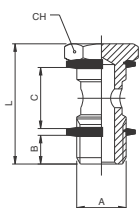
1510

ANELLO ORIENTABILE A T - DOUBLE BANJO BODY



Codice Code	Tubo Tube	A	D	S	L	Conf. Pack.
015100001	4/2.7	M5	9	12.5	43	50
015100002	4/2.7	1/8	14	15	43	50
015100003	5/3	M5	9	12.5	43	50
015100004	5/3	1/8	14	15	46.6	50
015100005	6/4	M5	9	12.5	43	50
015100006	6/4	1/8	14	15	46.6	50
015100007	6/4	1/4	18	17	50.6	25
015100008	6/4	3/8	21	20	53.6	25
015100009	8/6	1/8	14	15	49.4	25
015100010	8/6	1/4	18	17	55.2	25
015100011	8/6	3/8	21	20	55	25
015100012	8/6	1/2	26	24	61	25
015100013	10/8	1/8	14	15	53	25
015100014	10/8	1/4	18	17	59	25
015100015	10/8	3/8	21	20	61	25
015100016	10/8	1/2	26	24	66	25
015100017	12/10	3/8	21	20	63	25
015100018	12/10	1/2	26	24	70	25
015100019	15/12.5	1/2	26	24	73	25

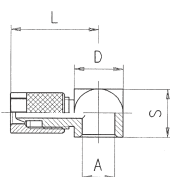
LG 410

VITE CAVA SINGOLA SERIE LEGGERA - BANJO STEM SINGLE LIGHT


Codice Code	A	B	C	L	CH	Conf. Pack.
LG41000002	M5	3.5	9	18	8	25
LG41000003	M6	4	9	19	8	25

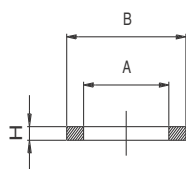
 QUESTO ARTICOLO VIENE FORNITO COMPLETO DI RONDELLE IN PA66 ART. 1610.
 THIS ITEM WILL BE SUPPLIED WITH THE PA66 WASHERS ART. 1610.

LG 500

ANELLO ORIENTABILE SERIE LEGGERA - SINGLE BANJO BODY LIGHT


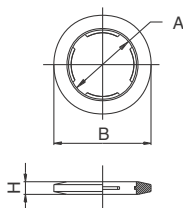
Codice Code	Tubo Tube	A	D	S	L	Conf. Pack.
LG50000003	4/2.7	M5	9	9	17	50
LG50000005	4/2.7	M6	9	9	17	50
LG50000004	5/3	M5	9	9	17	50
LG50000002	6/4	M5	9	9	16.5	50
LG50000006	6/4	M6	9	9	16.5	50

1600

RONDELLA IN ALLUMINIO - ALUMINIUM WASHER


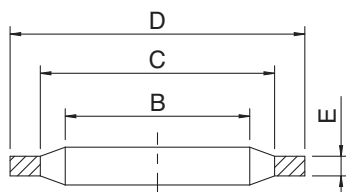
Codice Code	Misura Size	A	B	H	Conf. Pack.
01600011B500	M5	5.2	8	1	25
016000110200	1/8	10	14	1.5	25
016000110300	1/4	13.5	18	1.5	25
016000110400	3/8	16.8	21	1.5	25
016000110500	1/2	21.1	26	1.5	25
01600011D700	M12	12.5	18	1.5	25

1610

RONDELLA DENTELLATA IN PA66 - PA66 NOTCHED-WASHER


Codice Code	Misura Size	A	B	H	Conf. Pack.
016100025A700	M3	2.5	5.5	0.5	25
016100025B500	M5	5.2	8	1	25
016100025B800	M6	6.1	9	1.3	25
0161000250200	1/8	10	14	1.5	25
0161000250300	1/4	13.5	18	1.5	25
0161000250400	3/8	16.8	21	1.5	25
0161000250500	1/2	21.1	26	2	25
0161000250700	3/4	27	32	2.5	25
0161000250900	1"	34	41	2.5	25

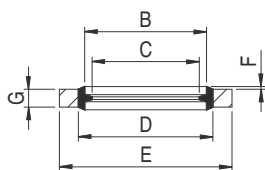
1612

RONDELLA BIMATERIALE IN ACCIAIO E NBR - STEEL AND NBR BIMATERIAL WASHER

CARATTERISTICHE TECNICHE / TECHNICAL CHARACTERISTICS

 Temperatura minima / minimum temperature: **-30°C**
 Temperatura massima / maximum temperature: **+100°C**

Codice Code	Misura Size	B	C	D	E	Conf. Pack.
0161200001	1/8	10.4	12	14.7	1.25	25
0161200002	1/4	13.85	15.75	18.7	1.25	25
0161200003	3/8	17.35	19.25	22.7	1.25	25
0161200004	1/2	21.65	23.55	26.7	1.25	25
0161200005	3/4	27.3	29.2	32.5	1.25	25
0161200006	1"	34.2	36.1	39.5	2	25

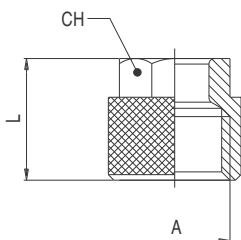
1613

RONDELLA AUTOCENTRANTI BIMATERIALE IN ACCIAIO E NBR - STEEL AND NBR CENTERING BIMATERIAL WASHER

CARATTERISTICHE TECNICHE / TECHNICAL CHARACTERISTICS

 Temperatura minima / minimum temperature: **-40°C**
 Temperatura massima / maximum temperature: **+100°C**

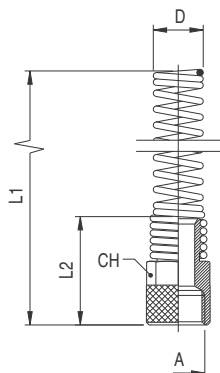
Codice Code	Misura Size	B	C	D	E	G	F	Conf. Pack.
016130001	1/8	10,4	8,6	11,85	14	2	0,3	25
016130002	1/4	13,75	11,45	15,2	17	2	0,3	25
016130003	3/8	17,3	15	18,75	22	2	0,3	25
016130004	1/2	21,55	18,65	23	26	2,5	0,4	25
016130005	3/4	27,05	24,15	28,5	32	2,5	0,4	25
016130006	1"	33,9	30,30	36,9	41	3,2	0,5	25

1700

DADO DI BLOCCAGGIO - LOCKING NUT


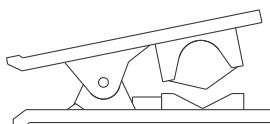
Codice Code	Tubo Tube	A	L	CH	Conf. Pack.
017000013ZNB	4/2.7	M6x0.5	9	7	50
017000016ZNB	5/3	M7x0.75	11	8	50
017000019ZNB	6/4	M8x0.75	11	8	50
017000010XNB	6/4	M10x1	11	10	50
017000014XNB	8/6	M12x1	11.5	12	50
017000015XNB	10/8	M14x1	13.5	14	50
017000016XNB	12/10	M16x1	15	15	50
017000017XNB	15/12.5	M20x1	16	19	50

1710

DADO DI BLOCCAGGIO CON MOLLA - LOCKING NUT WITH SPRING


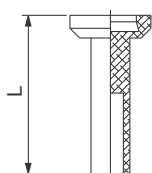
Codice Code	Tubo Tube	A	D	L1	L2	CH	Conf. Pack.
017100001	6/4	M10x1	9.4	93	20	11	25
017100002	8/6	M12x1	11.4	98.5	21	13	25
017100003	10/8	M14x1	13.4	107	24	14	25
017100004	12/10	M16x1	16	116.5	27.5	17	25

1750

TAGLIATUBO IN PLASTICA - PLASTIC PIPE CUTTER


Codice Code	Conf. Pack.
017500001	10

8610

TAPPO IN POLIAMIDE - POLYAMIDE PLUG


Codice Code	Tubo Tube	L	Conf. Pack.
086100031X1RO	4	23,5	25
086100031X3RO	5	24,5	25
086100031X4RO	6	24,5	25
086100031X7RO	8	26	25
086100031X9RO	10	28,5	25
086100031Y1RO	12	28,5	25